



2019 Community Benefit Report

Seattle 
Cancer Care
Alliance

Fred Hutch · Seattle Children's · UW Medicine

2019 Community Benefit Report

Introduction

Seattle Cancer Care Alliance (SCCA) brings together the leading research teams and cancer specialists of Fred Hutchinson Cancer Research Center, Seattle Children's Hospital, and UW Medicine. SCCA is designated a comprehensive cancer center by the National Cancer Institute. We transform groundbreaking research into lifesaving realities for patients with cancer.

As a nonprofit, mission-driven organization, SCCA takes seriously our commitment to serving our community. Our Community Benefit program takes our goal to provide better, longer, richer lives for our patients and extends it to everyone living in our service area.

2019 Spotlight: Supporting community-based health promotion

SCCA kicked off a new Community Benefit initiative in 2019: our Community Health Grant program. The grants are intended to expand the impact of our resources by supporting local organizations that provide underserved community members with access to information, guidance, and services for cancer prevention, screening, and treatment. Recognizing there are many existing organizations that have experience and expertise in community health promotion — and that these organizations have the trust and respect of the populations they are serving — SCCA's Community Health Grant program aims to provide funding and partnership to help the organizations thrive. Applicants focused on engaging with underserved communities may apply for funding to support existing activities, enhance a program with new activities, or expand a program's reach to serve more people.

Three applicants were selected for grant awards in 2019: Cierra Sisters, Korean Women's Association, and Stilly Valley Health Connections.

Cierra Sisters

A breast cancer education and support organization, Cierra Sisters aims to empower African American and underserved communities. They focus on evidence-based knowledge and provide access to resources, guidance, treatment and support to help community members through their breast cancer experience. Cierra Sisters predominantly serves communities in South King County and Pierce County.

SCCA's grant to the Cierra Sisters helped support several activities. One was the existing Skyway Wellness Festival that provides education and screening services, and the expansion of the Wellness Festival model to an event in Lakewood in Pierce County. Another was their Community Empowerment Program training, which is a peer-reviewed model for training peer leaders to conduct outreach in their communities. The grant also enabled hiring additional staff to organize and develop programming.

Korean Women's Association

Korean Women's Association (KWA) began as a group of volunteers in 1972, established to help fellow immigrants overcome language and cultural barriers and gain access to community services. Today, the organization serves clients of all races and ethnicities across eleven counties in Washington. KWA's Community & Behavioral Health staff provides breast and colorectal cancer screening and patient navigation services. Staff includes multi-cultural navigators who provide support in several languages.

2019 Community Benefit Report *continued*

SCCA's grant to KWA supported two breast cancer screening events in Tacoma, using SCCA's mobile Mammogram Van, and a third event will take place at the Asia Pacific Cultural Center in Tacoma. KWA also used grant funding to conduct eight breast and colorectal cancer prevention seminars in Pierce, Snohomish, and King Counties. The impact included:

- **10 new educational materials** were developed for various languages and communities.
- **1,000+ individuals were contacted** for outreach to the seminars and mammogram van events.
- **594 individuals received cancer prevention education** in-person.

Stilly Valley Health Connections

Stilly Valley Health Connections serves the northeastern portion of Snohomish County and provides public health outreach programs and services to suburban and rural communities. Its areas of focus include mental health, nicotine prevention and cessation, drug and alcohol prevention, as well as overall community health and wellness.

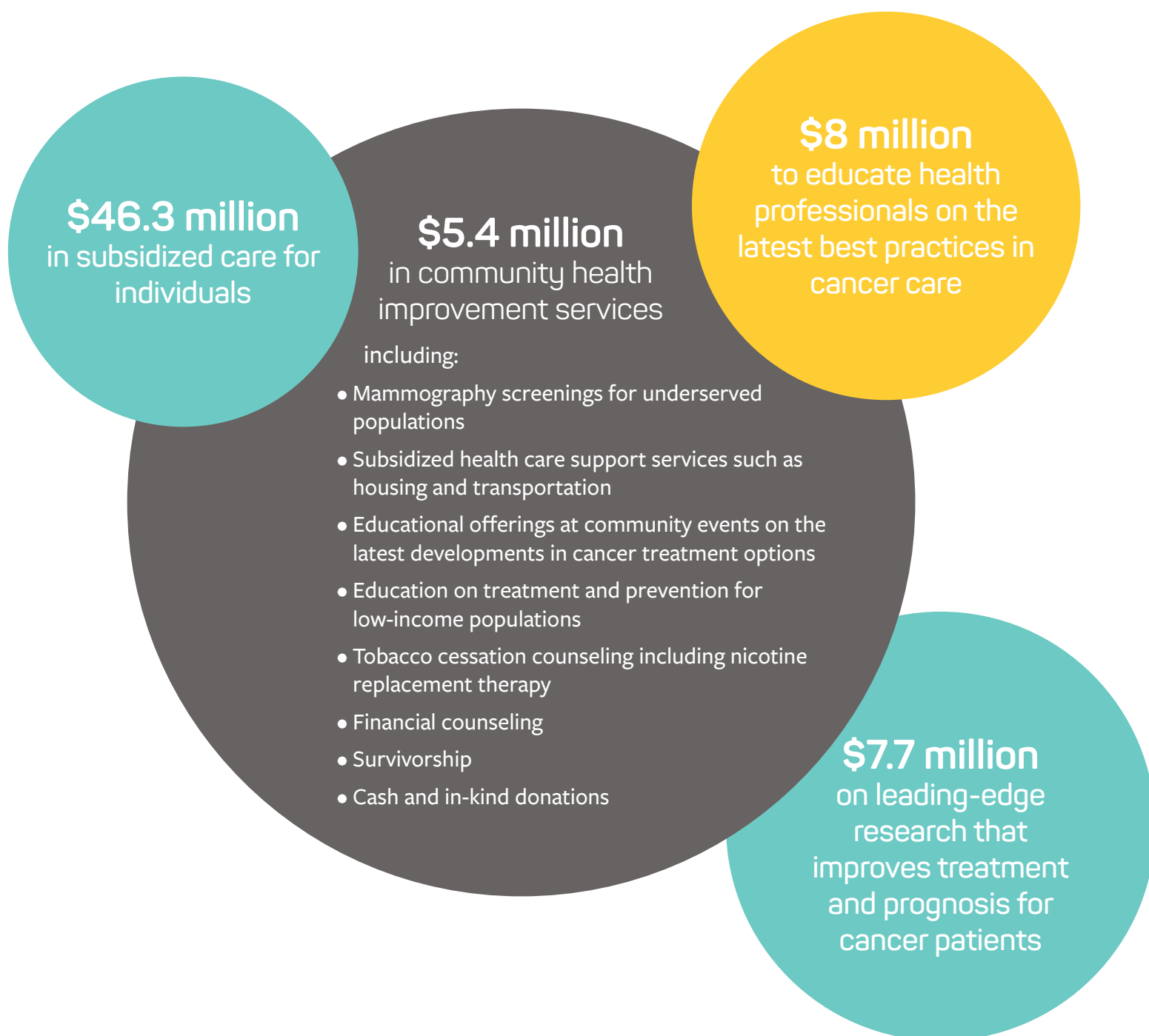
SCCA's grant to Stilly Valley Health Connections supported the formation of a nicotine cessation program—a resource that was entirely lacking for community members in its service area. Stilly Valley Health Connections hosted several E-Cigarette Train the Trainer workshops to provide education and outreach regarding e-cigarettes, preparing participants to work with youth organizations and schools. The organization also implemented American Lung Association curriculum for smoking cessation groups, including online programming. Stilly Valley Health Connections attended several health and resource fairs to distribute nicotine cessation education information, reaching over 135 individuals from local high schools, the Chamber of Commerce, and the Sauk-Suiattle Indian Tribe.

2019 Community Benefit Report *continued*

Community Benefit resource investment

During SCCA's 2019 fiscal year, we devoted over \$67.4 million — more than 9.8 percent of our operational costs — to community benefit activities. A significant portion of this funding extended our high-quality clinical services to those who could not otherwise afford them, providing subsidized care and offering needed services at a financial loss. We also invested in community health improvement activities aimed at reducing the burden of cancer among high needs populations through programs such as mobile mammography screenings, grants to community health organizations, research, and education opportunities for health professionals at SCCA and in the community.

Here is an overview of our investment in the community



2019 Community Benefit Report *continued*

Community Benefit allocations

Uncompensated care includes free or discounted health services provided to patients who can't afford to pay and who meet SCCA or government criteria for assistance. \$ 46,263,389 **69%**

Community health improvement services and community benefit operations are services that are intended to improve the health of our communities and go above and beyond direct patient care services to individuals. \$ 2,915,525 **4%**

Health professions education includes the work that SCCA does to train medical professionals in the community in the type of advanced care and support that SCCA provides, in order to share expertise and expand our reach beyond our immediate patient population. \$ 8,042,709 **12%**

Research includes clinical and community-health research that SCCA undertakes, with results that are shared outside SCCA and used to improve the practice of health care. \$ 7,744,071 **11%**

Cash and in-kind contributions for community benefit include funds, materials, and staff resources that are donated to individuals and community groups. \$ 2,523,144 **4%**

Total **\$ 67,488,838**
