

5TH ANNUAL  
VALUE IN CANCER CARE SUMMIT 2018

---

# Community Cancer Care in Washington State: Quality and Cost Report 2018

**Scott Ramsey, MD, PhD**

Director, Hutchinson Institute for Cancer Outcomes Research

**HICOR**  
at FRED HUTCH

*No conflicts to disclose*

Presentation from HICOR Value in Cancer Care Summit 2018 - Please cite author when referencing content

# Mission



Eliminate cancer and related diseases as causes of human suffering and death.



Improve the effectiveness of cancer prevention, early detection and treatment services in ways that reduce the economic and human burden of cancer.

We believe that every cancer patient in Washington state should get quality care that meets their goals at a reasonable cost, wherever they live.

# Community Cancer Care in Washington State: Cost and Quality Report 2018

[www.fredhutch.org/cancer-care-report](http://www.fredhutch.org/cancer-care-report)

First in the nation to publicly report clinic-level quality measures linked to cost in oncology

Fred Hutch and Washington state are showing national leadership in data transparency in cancer care.

Unprecedented collaboration between health care stakeholders: payers, providers, patients, researchers



# Community Cancer Care Report

Our goal is to promote **TRANSPARENCY** so that providers, payers, patients and researchers have access to the same high quality information in order to:

- Enable sharing of best practices
- Facilitate collaboration across traditional boundaries
- Develop shared solutions
- Test feasibility, effectiveness and scalability of new models of care  
(*Cancer Care Delivery Research*)

# Rules of Use and Disclosure

## Optimal Uses of Performance Metrics

- Drive quality improvement within clinics
- Facilitate collaboration to improve care in the community
- Share best practices

## Rules of Use

For at least two years after release of this Report, its data ***may not*** be used for the following:

- Establishing coverage networks
- Designing employee benefit packages
- Negotiating contracts without mutual agreement from all involved parties
- Clinic or payer advertising or marketing

## Health Care Claims

Premera Blue Cross  
Regence BlueShield  
Uniform Medical Plan | Medicare  
2007-2017

## Cancer Registries

CSS-Puget Sound SEER  
Washington State Cancer  
Registry  
2007-2017

**Clinical, Utilization, Cost and Survival Data  
for ~70% of cancer patients in Washington state**

Over 160,000 patients at Diagnosis  
Over 60,000 at Time of Death

**Reporting Years: 2014 – 2016**

Presentation from HICOR Value in Cancer Care Summit 2018 - Please cite author when referencing content

# What's in the report

## Quality Measures

### Recommended Treatment

- Breast, Colorectal, and Lung Cancer
- Breast Cancer

### Hospitalization During Chemotherapy

### Follow-up Testing after

- Breast, Colon, and Lung Cancer Treatment
- Breast Cancer Treatment

### End of Life Care

## Cost of Episodes of Care

Treatment period

6 months after first  
chemotherapy

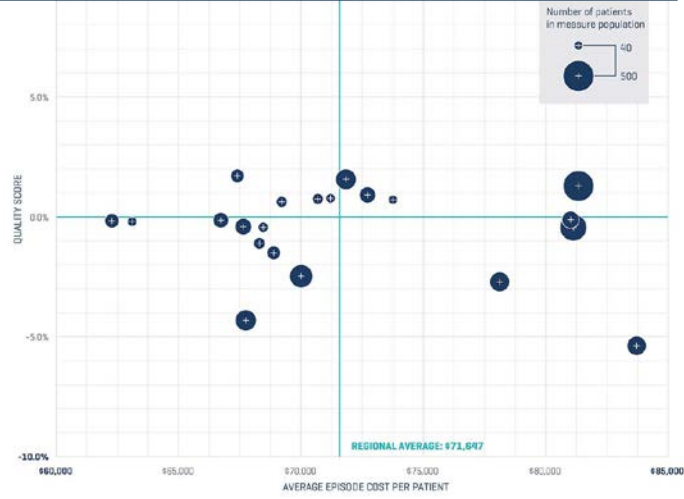
13 months after last treatment

Last 30 days of life

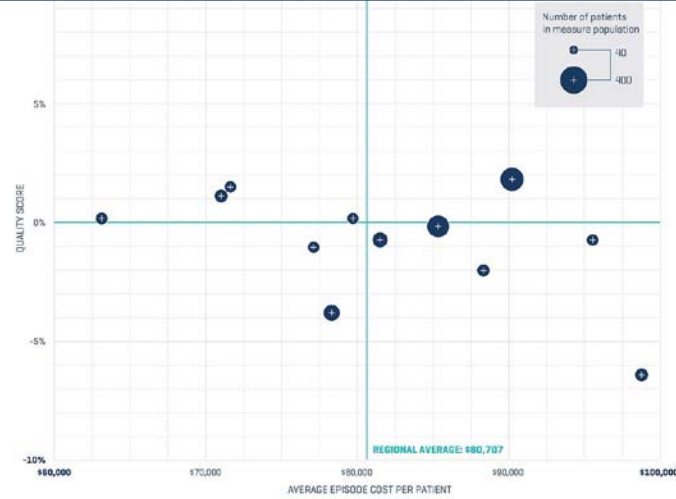
Presentation from HICOR Value in Cancer Care Summit 2018 - Please cite author when referencing content



### 1A: Recommended Treatment



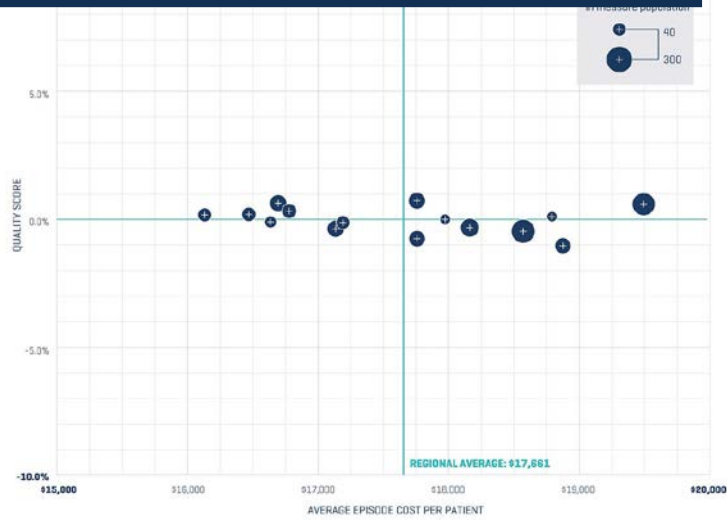
### 1B: Recommended Treatment (Breast)



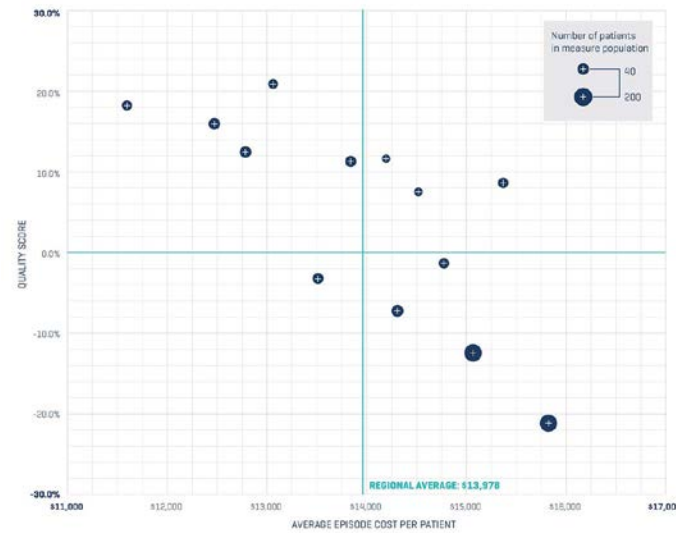
### 2: Chemo Hospitalization



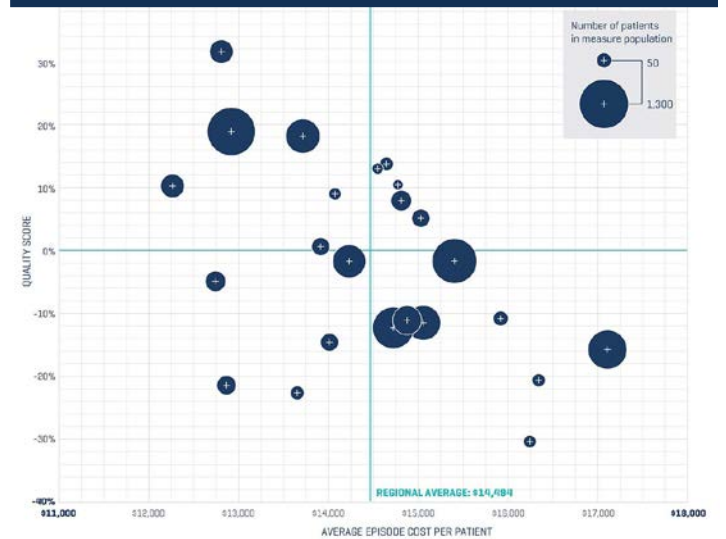
### 3A: Follow-Up Imaging



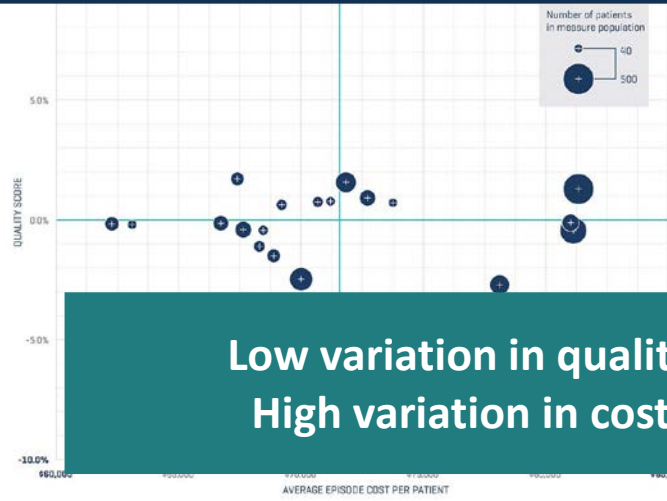
### 3B: Follow-Up Testing (Breast)



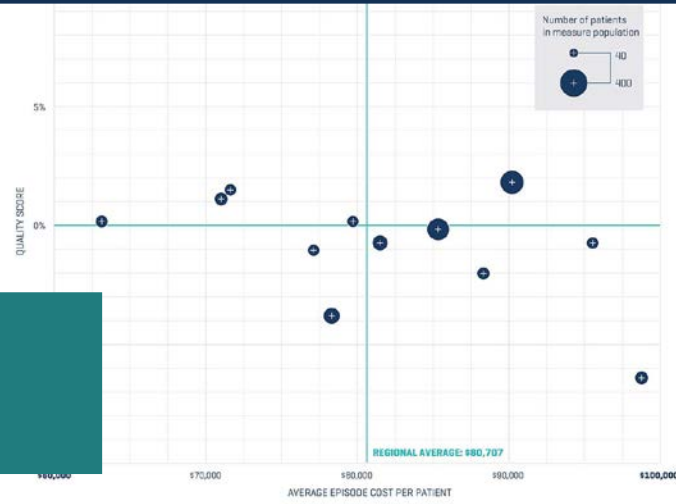
### 4: End of Life



### 1A: Recommended Treatment



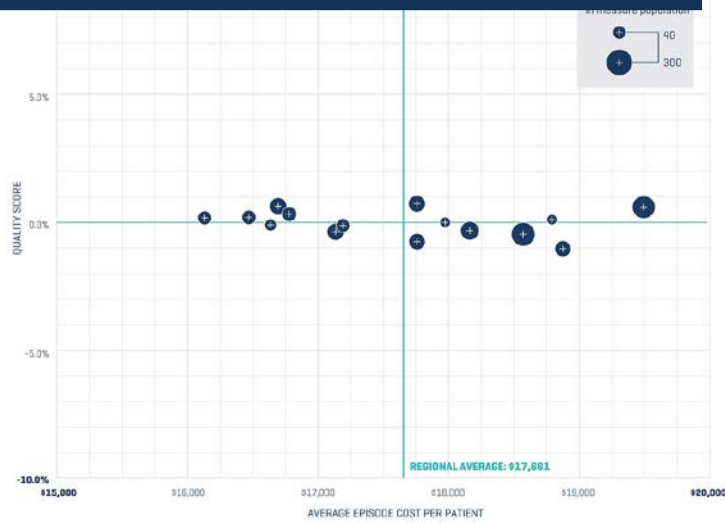
### 1B: Recommended Treatment (Breast)



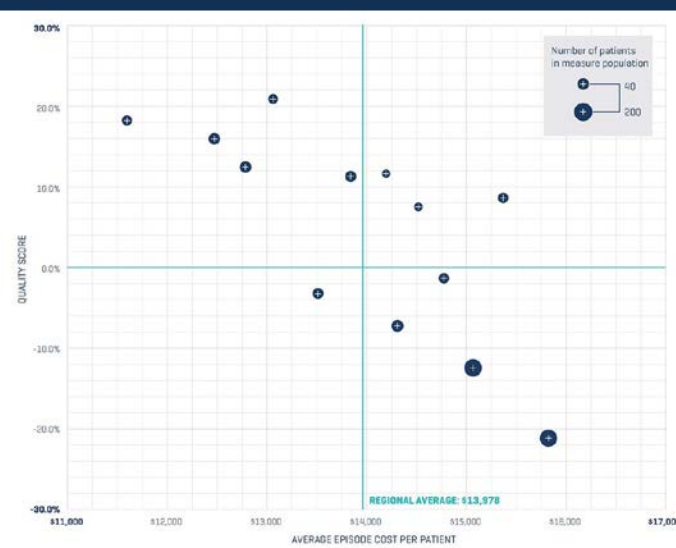
### 2: Chemo Hospitalization



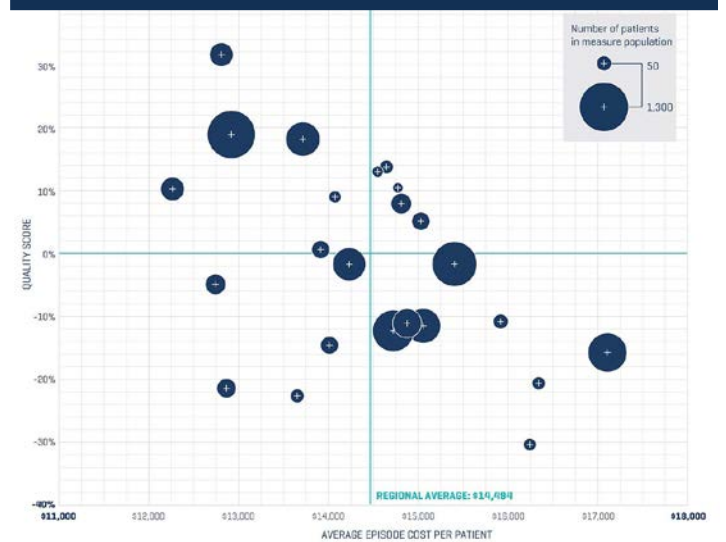
### 3A: Follow-Up Imaging



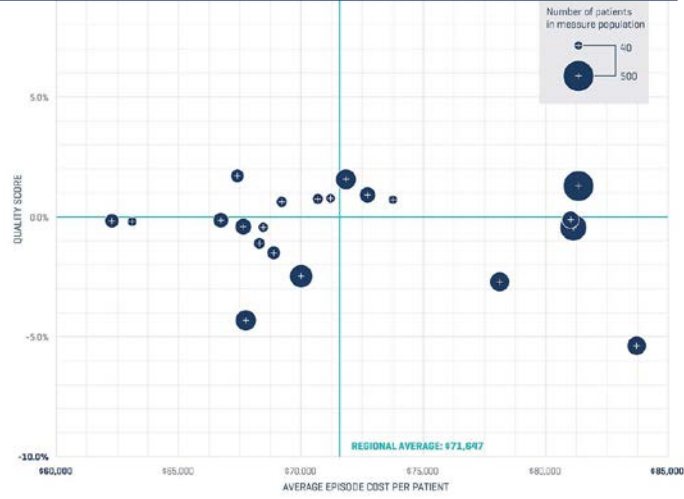
### 3B: Follow-Up Testing (Breast)



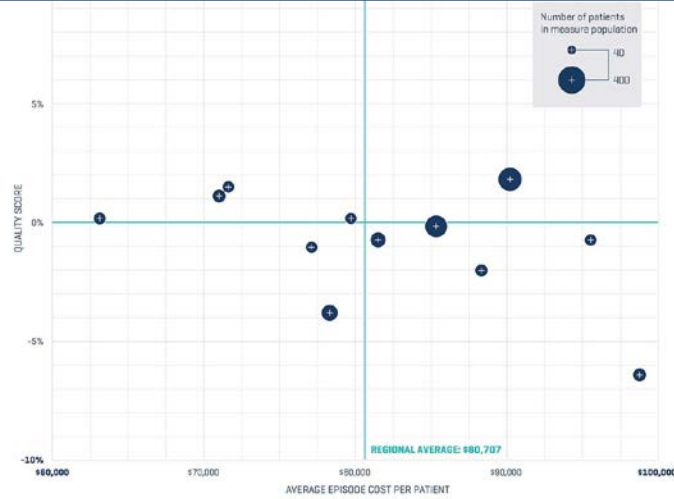
### 4: End of Life



### 1A: Recommended Treatment



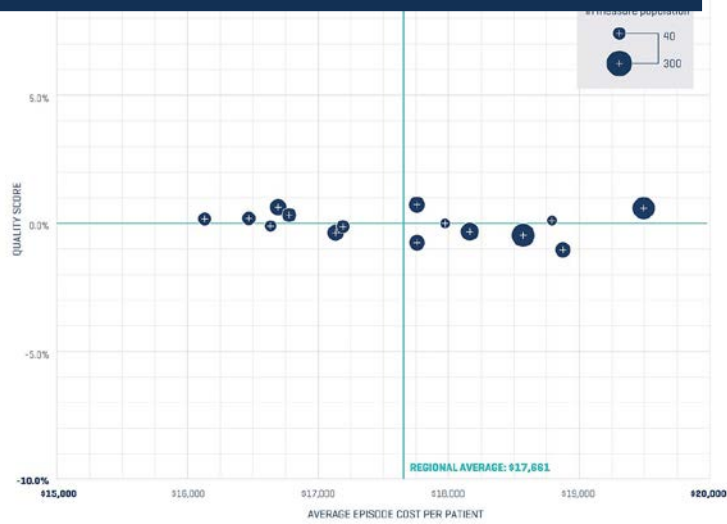
### 1B: Recommended Treatment (Breast)



### 2: Chemo Hospitalization



### 3A: Follow-Up Imaging



### 3B: Follow-Up Testing (Breast)



High variation quality and cost

### 4: End of Life



## 2: Hospitalization during chemotherapy

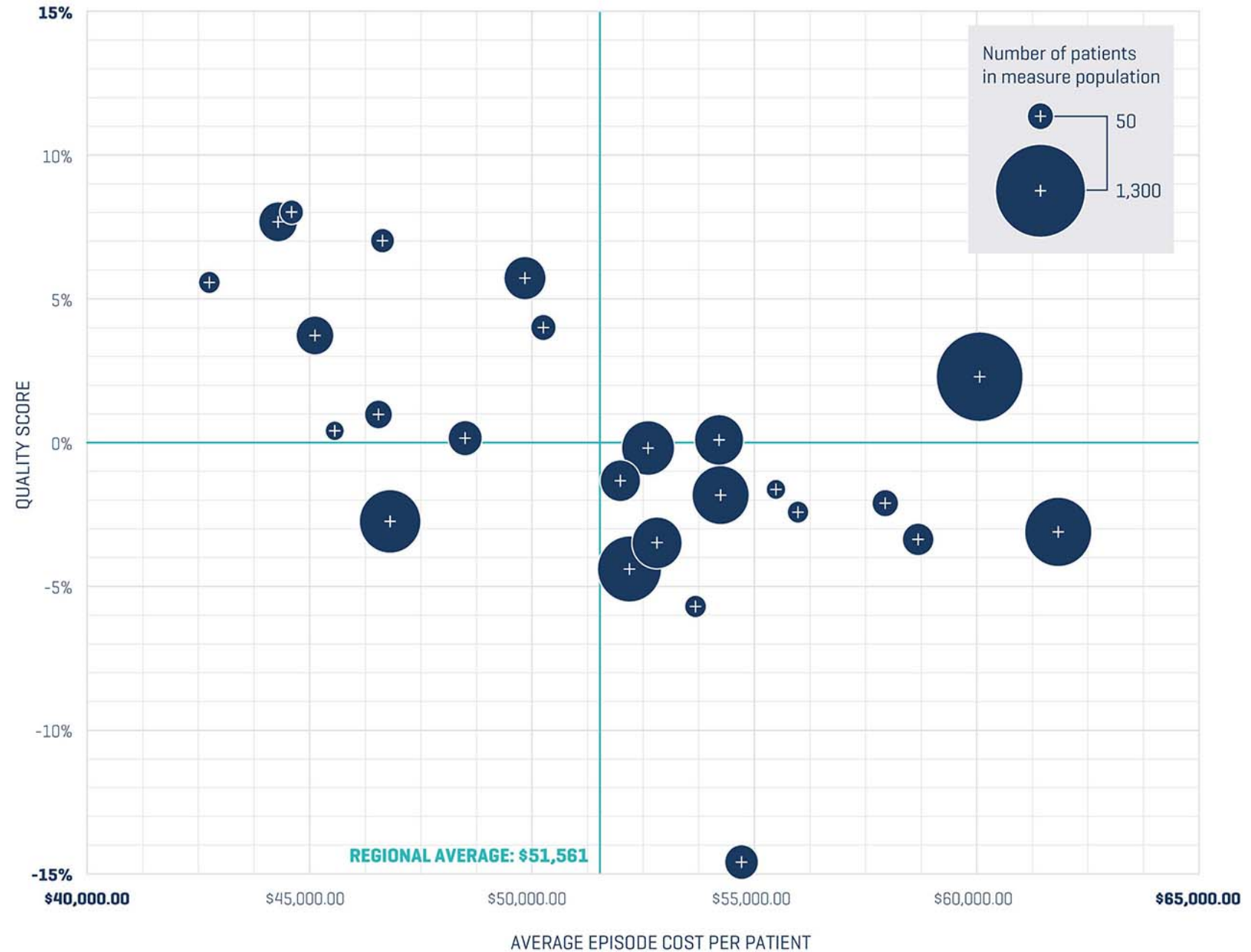
Regional average cost:  
**\$51,561**

Follow-up episode average length:  
**168 days**

Cost range: **\$19,090**

The quality score:  
difference of **22.6%**

Strong negative relationship, suggesting that efforts to improve quality may also lower costs.



# 3B: Follow-up testing after breast cancer treatment

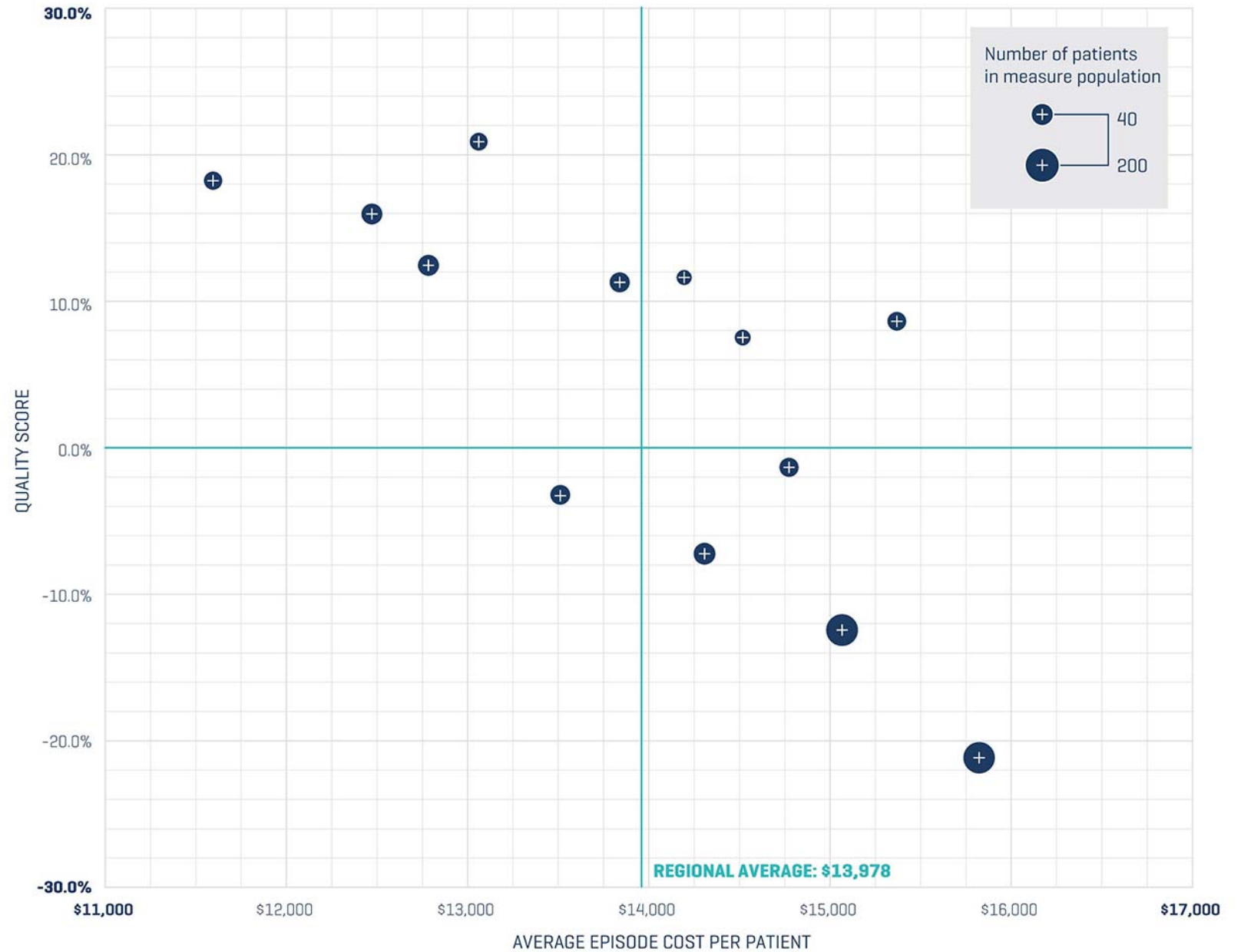
Regional average cost:  
**\$13,978**

Follow-up episode average length: **388 days**

Cost Range: **\$4,219**

The quality score: difference of **42.1%**

There is a strong negative relationship: indicating higher quality is associated with lower costs.



# 4: End of life care

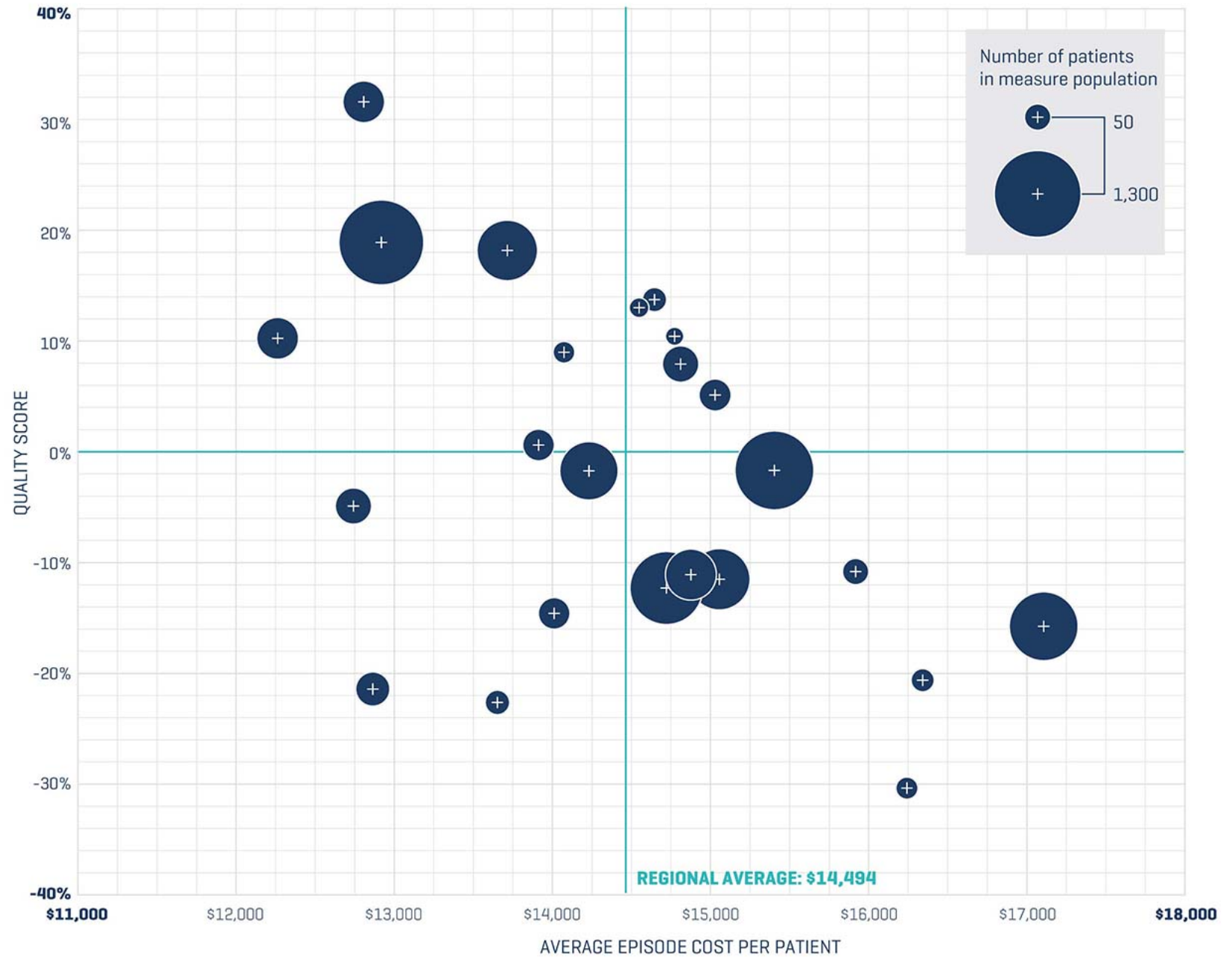
Regional average cost:  
**\$14,494**

Last 30 days of life

Cost range: **\$4,832**

The quality score:  
difference of **61.8%**

There is a strong negative relationship: indicating higher quality is associated with lower costs.



# Making Measurement Matter: Our Strengths

- Partnerships
- Strong community engagement
- Comprehensive, current data asset

# Making Measurement Matter: What do we need to create change?

- Innovative ideas
  - Capitalize on unique science and technology environment in Washington state
- Novel partnerships and resources to leverage the ideas
  - Flexible funding
- Willingness to pilot test novel approaches
  - Implement strategies that work
  - Move on from approaches that don't work
  - Hold fast to the goal of making cancer care better



# Collaboration across organizations, fields, and geography is necessary to create solutions to address challenges in cancer care



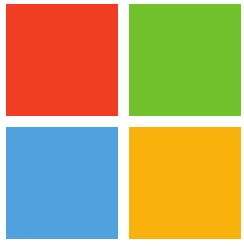
Presentation from HICOR Value in Cancer Care Summit 2018 - Please cite author when referencing content



**FRED HUTCH**  
CURES START HERE®

**Use data visualization platform  
to understand barriers to care  
and challenges for vulnerable  
populations**

Presentation from HICOR Value in Cancer Care Summit 2018 - Please cite author when referencing content



Microsoft



**FRED HUTCH**  
CURES START HERE®

**Use AI, machine learning and biosensors for early identification of treatment-related symptoms to reduce ER visits during chemotherapy**

Presentation from HICOR Value in Cancer Care Summit 2018 - Please cite author when referencing content

# Thank you to the Community Cancer Care Report team

- Catherine Fedorenko
- Karma Kreizenbeck
- Laura Panattoni
- Julia Walker
- Sarah Barger
- Ari Bell-Brown
- Qin Sun
- Lily Li
- Shasank Chennupati
- Greg Warnick
- Judy Nelson
- Jim Woolace



Presentation from HICOR Value in Cancer Care Summit 2018 - Please cite author when referencing content